

# AQUARIUS

## SINGLE-JET METER

**DIEHL**  
Metering



### APPLICATION

AQUARIUS is a single jet water meter designed for measuring consumption of cold or hot water in housing blocks.

Developed within the framework of the MID, AQUARIUS complies with the European regulations and holds a sanitary conformity certificate.

AQUARIUS is modular and can be fitted at any time with an IZAR clip-on module, converting it into a communicating meter ready for mobile or fixed (radio/wired) network reading.

### FEATURES

- ▶ DN15
- ▶ Q3=2.5m<sup>3</sup>/h
- ▶ MID approval up to R=100H and R=40V
- ▶ Starting flow rate: 12 l/h
- ▶ Brass and composite body
- ▶ Modular

# AQUARIUS

## SINGLE-JET METER

### METROLOGICAL DATA

Nominal diameter	DN	mm	15	15	15
Length	L	mm	80	110	115
Body			Brass	Composite	Composite
Nominal flowrate	Q <sub>3</sub>	m <sup>3</sup> /h	2.5	2.5	2.5
R standard*	(Q <sub>3</sub> /Q <sub>1</sub> )		80H-40V	80H-40V	80H-40V
Starting flowrate - horizontal		l/h	12	12	12
Minimum flowrate - horizontal	Q <sub>1</sub>	l/h	31	31	31
Transition flowrate - horizontal	Q <sub>2</sub>	l/h	50	50	50
Minimum flowrate - vertical	Q <sub>1</sub>	l/h	62.5	62.5	62.5
Transition flowrate - vertical	Q <sub>2</sub>	l/h	100	100	100
Maximum flowrate	Q <sub>4</sub>	m <sup>3</sup> /h	3.125	3.125	3.125
Head loss at Q <sub>3</sub>		bar	0.56	0.56	0.56
Head loss at Q <sub>4</sub>		bar	0.89	0.89	0.89
Kvs (deltaP=Q <sup>2</sup> /Kvs <sup>2</sup> )			3.34	3.34	3.34

\* other values on request - H=horizontal installation position / V=vertical installation position

### APPROVAL

AQUARIUS	
MID approval	LNE-6904 B1 type   LNE-30014 B2 type
Standards	EN 14154   ISO 4064   OIML R49
Sanitary conformity	ACS

### REACH

Information pursuant to Article 33 (1) of Regulation (EC) No 1907/2006 of the European Parliament and of the Council of 18 December 2006:

This product series contains articles with the following substances in a concentration of more than 0.1% weight by weight (w/w):

- Lead (CAS no.: 7439-92-1)

### TEMPERATURE AND PRESSURE

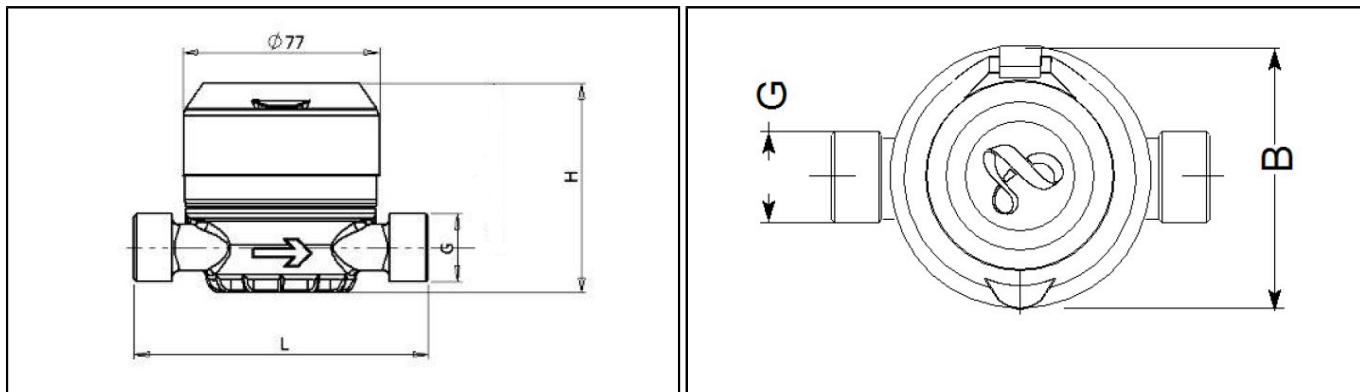
AQUARIUS		
Water temperature*	°C	+0.1 ... +50 / +0.1 ... +90
Ambient operating temperature	°C	+1 ... +55
Storage temperature	°C	-10 ... +55
Nominal pressure	bar	16

\* composite version : only +0.1 ... +50°C

# AQUARIUS

## SINGLE-JET METER

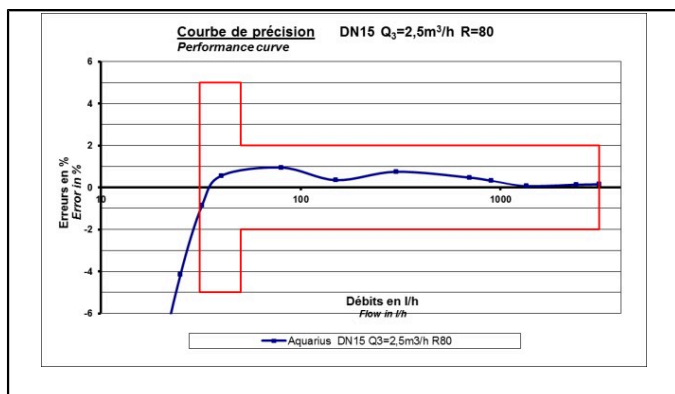
### DIMENSIONS



Nominal diameter	DN	mm	15	15	15
Length	L	mm	80	110	115
Body			Brass	Composite	Composite
Width	B	mm	77	77	77
Total height	H	mm	78	72	72
Thread connections	G	inch	3/4"	3/4"	3/4" (*)
Weight		Kg	0.46	0.21	0.21

\* other values on request

### PRECISION CURVE



DN 15

The technology doesn't require straight length.

### OPTION

- Glass-metal register